

# WHERE IS GREEN INFRASTRUCTURE?



Stormwater  
Department



Green infrastructure is used by the City of San Diego's Stormwater Department at various scales - from small sites to entire neighborhoods - to protect against flooding and keep pollutants out of waterways. When paired with traditional infrastructure, green infrastructure modernizes the overall stormwater system to help create safe, sustainable and thriving communities.

## in our parks

Multi-use treatment areas are basins or underground tanks where runoff can be stored to capture pollutants and reduce flooding. They can also improve public spaces for local communities.



## in our neighborhoods

Rain barrels, rain gardens and other site-scale strategies allow for capture and use of rainfall to water plants.



## along our streets

Green infrastructure on streets is designed to collect stormwater from road gutters and treat it using plants and soil.



You can help the City keep our water safe and clean with your own green infrastructure! Building a rain garden or installing a rain barrel naturally cleans stormwater and reduces the amount of wet weather runoff going untreated into our storm drain system.



Visit the Think Blue San Diego website to learn more:  
[thinkblue.org](http://thinkblue.org)

# WHAT IS GREEN INFRASTRUCTURE?



Stormwater  
Department

## Green infrastructure projects are built structures and technologies designed to manage stormwater runoff.

These projects are engineered to mimic nature by capturing stormwater before it can enter our waterways, filtering it through soil and plants to remove pollutants, storing it for later, and watering plants.

### cleaner water

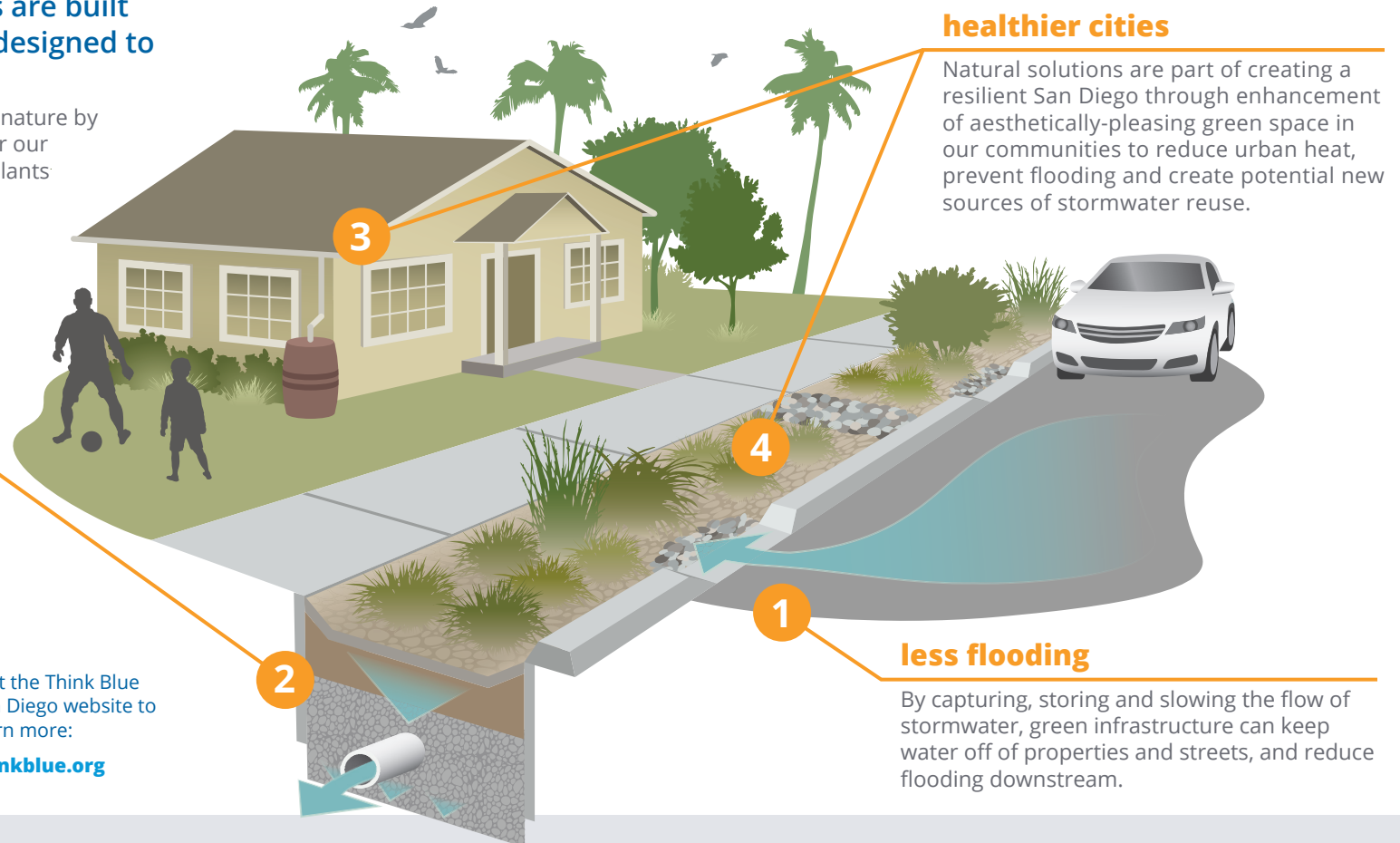
Green infrastructure filters pollution from stormwater using natural processes, so that cleaner water drains to canyons, rivers, bays and beaches.



THINK BLUE  
SAN DIEGO

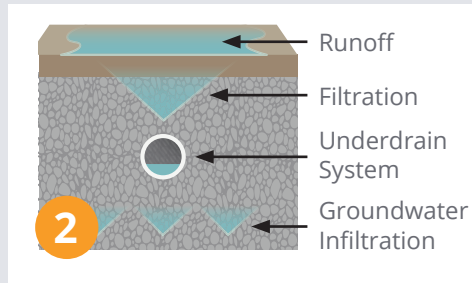
Visit the Think Blue San Diego website to learn more:

[thinkblue.org](http://thinkblue.org)



1

Capture



2

Filter



3

Store



4

43rd and Logan

Grow